

THE KATHLEEN D. SELINE ENDOWED BOOK FUND

The Seline Family Foundation of Omaha, NE, informed Creighton University of its desire to establish and fund a perpetual endowment for the Health Sciences Library / Learning Resources Center in honor of Kathleen (Kay) Seline.

Kay Seline embodied the spirit of Creighton University. She lived to provide service to others and combined that with a keen sense of community. Her career at Creighton spanned nearly three decades and included many milestones in the University's history. She was the first woman named to an upper level administrative post at Creighton, serving as Assistant Vice President for Health Sciences from 1979 until her death in 1992. She began her career at Creighton in 1964 as a secretary in the College of Business Administration and served as Special Assistant to the Dean of the School of Dentistry before moving to the office of the Vice President for Health Sciences.

As project manager, she was instrumental in the planning, implementation, and construction of the School of Dentistry, **the BioInformation Center** (where the Health Sciences Library is housed), and the School of Nursing renovation.

In her capacity as Assistant Vice President for Health Sciences she was responsible for strategic planning, minority affairs, pastoral care, and public relations in the health sciences schools. She was a liaison with the U.S. Congress and the Nebraska Unicameral. Kay's service to the University extended beyond campus to a variety of community health agencies and causes as well as to national academic health organizations.

A plaque recognizing her service to Creighton is mounted on a wall just outside the conference room of the Vice President for Health Sciences. It states, "*Kay Seline's commitment to service and to the Creighton community, her ability to motivate others and direct a diverse variety of special projects helped make the health science division what it is today. Her profound influence will always be apparent at Creighton University.*" As well as words can capture the wonderful achievements Kay accomplished, this statement accurately describes her career at Creighton University.

The HSL/LRC will use the funds generated from this endowment to purchase library materials for the faculty, staff, and students of the health science schools and programs. It is a gift that will keep on giving and we at the University are most grateful for the generosity of the Seline Family Foundation.



Kathleen D. Seline

(For more information on endowed book funds at the HSL, please see page two.)



LIBRARY HOURS

SPRING BREAK

Saturday, March 5	10:00 a.m.- 6:00 p.m.
Sunday, March 6	10:00 a.m.- 6:00 p.m.
Monday-Thursday, March 7-10	7:30 a.m.- 8:00 p.m.
Friday, March 11	7:30 a.m.- 6:00 p.m.
Saturday, March 12	10:00 a.m.- 6:00 p.m.
Sunday, March 13	RESUME REGULAR HOURS

EASTER

Holy Thursday, March 24th	7:30 a.m. - 6:00 p.m.
Good Friday, March 25th	9:00 a.m. - 5:00 p.m.
Saturday, March 26th	10:00 a.m. - 6:00 p.m.
EASTER SUNDAY, March 27th	CLOSED

REGULAR HOURS ARE LISTED ON THE BACK COVER

Quik Bytes



To stay up to date on what is going on in the HSL between issues of the BICInformer, checkout Quik Bytes (<http://www.hsl.creighton.edu/HSL/quikbytes/QuikBytes.html>), an electronic newsletter published each Friday during the academic year. An alert that a new issue of Quik Bytes is available will be posted on JayNet News.

The **BICInformer** is published four times a year by the Health Sciences Library / Learning Resources Center of the Creighton University Medical Center.

Editor: John Mitchell

Lay-out, Design, and Distribution: Sue Chamberlin

Web Distribution: Sue Chamberlin and Madonna Knudson

Contributors: Judi Bergjord, Diana Boone, Jim Bothmer, Jeanne Burke, Sue Chamberlin, John Mitchell, Bryan Stack

Endowed Book Funds

With the generous creation of the **Kathleen D. Seline Endowed Book Fund**, the Health Sciences Library currently maintains 16 endowed book funds (listed below). Books purchased with endowed funds are labeled with bookplates commemorating the donors. The library is grateful to all those who have contributed to these funds over the years.

For a list of materials purchased with endowed funds, please contact **Jane Fishkin**, Acquisitions Coordinator, at jpfish@creighton.edu or **280-5136**.

To create an endowed book fund or to contribute to an existing one, please contact **Jim Bothmer**, Health Sciences Library Director, at jbothmer@creighton.edu or **280-5120**.

Endowed Book Funds for the Health Sciences Library

- ✦ Charles J. **Antonini** Family Endowed Book Fund
- ✦ Pasquale A. **Carone**, Sr., M.D. Endowed Book Fund
- ✦ Thomas J. **Cinque** M.D. Endowed Book Fund
- ✦ D. Arnold **Dowell** M.D. Endowed Book Fund
- ✦ **Ferraro** Endowed Book Fund
- ✦ Edward and Leslie **Goldenberg** Endowed Book Fund
- ✦ Wayne & Carol **Leadbetter** Endowed Book Fund
- ✦ **Mango** Endowed Book Fund
- ✦ E. Ann **Myers** M.D. & T. Otis **Paul** M.D. Endowed Book Fund
- ✦ Sal & Marilyn **Santella** Endowed Book Fund
- ✦ Kathleen D. **Seline** Endowed Book Fund
- ✦ Robert and Elizabeth **Sestero** Endowed Book Fund
- ✦ William and Patricia **Tipton** Endowed Book Fund
- ✦ Alessandro **Trombetta** Endowed Book Fund
- ✦ Dr. Patrick and Linda **Vetere** Endowed Book Fund
- ✦ Dr. James and Kerry **Vincent** Endowed Book Fund

HOLIDAY SPIRIT REPORT

The **Giving**

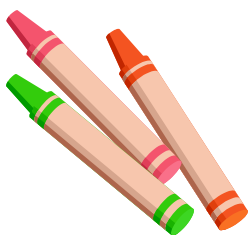
Spirit is alive and well at Creighton's Health Sciences Library.

In November and December, the library accepted donations of non-perishable food items for payment of library fines. The 111 food items collected were donated to the St. Martin DePorres Food Bank.

In addition, the Health Sciences Library collected three bags of clothing items and \$60.00 in cash for the Lydia House / Open Door Mission.

Many thanks to all for your generosity!

Color Printing Now Available at the HSL



Color laser jet printing is now available at the Health Sciences Library through Pharos, the printing system used by the computer workstations in the library. For color printing, simply select the PharosColor option when sending your print job to the printer. Please note that the color print jobs appear only at the release station on the main level of the library. Patrons are able to send color print jobs from the Learning Resource Center machines, but these print jobs will not appear at the LRC release station. Patrons will need to release their color print jobs from the release station on the main level of the library, near the Reference Desk. At 30 cents per page, color copies at the HSL are the best color copy deal on campus!

Choosing Between Print and Online Journal Formats

The challenges our serials collection contends with due to ever-increasing journal subscription costs is documented on pages four and five of this issue. Contributing to this “serials challenge” is the increasingly common practice of journal publishers requiring a separate subscription for online access to electronic journals which were formerly available free with a subscription to the print version.

While the Library struggles to keep all its present subscriptions from year to year because of inflationary pressures, it is yet another challenge to pay additional costs for dual formats of a journal. After an investigation of the possibilities, the Library will institute a policy and practice for dealing with these questions. More details will be provided in a future issue of the BIC Informer.

PUBMED News: “Cubby” Changes to “My NCBI”

If you have used “Cubby” to store your PubMed search strategies, you may have noticed that it changed on Feb. 1st to “My NCBI”. All of the searches saved in “Cubby” have been moved over to this new location along with each account’s **user name** and **password** information. In addition to storing PubMed searches for free, “My NCBI” will allow individuals the flexibility of setting up and saving specific searches to run on an ongoing, pre-set schedule. The citations generated from each search will then be sent to the account’s e-mail address.

Another notable upgrade is the ability for users to incorporate up to five filters in a saved search. (*English* and *Humans* are examples of two commonly used filters.)

For more in-depth information on these and other recent changes to PubMed, go to http://www.nlm.nih.gov/pubs/techbull/jf05/jf05_myncbi.html or contact the HSL/LRC Reference Dept. at 280-5138.

✓ A Software Tip to Keep in Mind

Having trouble accessing a link or a document online? You may want to make sure that you have the most recent versions of Internet browsers, Adobe Acrobat, and e-mail programs on your computer.

Older software programs, such as Adobe Acrobat, are often found to be the reason individuals are unable to retrieve full-text documents or other web information from the Health Sciences Library/Learning Resources Center's web site.

Be sure to remember to delete your older Adobe Reader before installing the new one. Older programs have been known to cause problems when installing the newer versions. If you have other questions about downloading programs, the CU Help Desk is available to assist you at (402) 280-1111 or it_help@creighton.edu

Lunch and Learn Series

Thune Seminar Rooms 12:00–1:00pm

The New Cochrane Library Interface	Feb 24th
PDAs in Clinical Practice	
Dan Young, MD	Mar 3
Experiencing the Irish, Scots, And English Cultures	
Marvel Maring Guest Speaker	Mar 17
Medical Electronic Books & Resources	Mar 31

Serials Changes: Challenges Continue

As the Health Sciences Library prepared to renew journal subscriptions for 2005, it became clear that some subscriptions would need to be discontinued, especially in order to honor some requests for new subscriptions. The Library identified titles with low use or a high ratio of cost to use, and surveyed Health Sciences faculty to identify any of those titles which should be kept for professional reasons.

As a result of this survey, these subscriptions were not renewed but many of these can still be accessed through other sources as indicated below:

E= AVAILABLE VIA EBSCOhost

**E12= AVAILABLE VIA EBSCOhost
WITH A 12 MONTH EMBARGO**

W= AVAILABLE VIA Wilson OmniFile

Charleston Advisor
 Cytogenetic & Genome Research [E]
 Digestion [E]
 DRR Blue Sheet: Health Policy & Biomedical
 Research
 Dysphagia [E]
 Family Process [E]
 Growth Factors [E12]
 Health Services Management Research
 Human Gene Therapy
 In Vivo
 International Journal of Nursing Terminologies
 and Classifications [E]
 Journal of Ambulatory Care Management [E]
 Journal of Audiovisual Media in Medicine [E12]
 Journal of Autism & Developmental
 Disorders [E12]
 Journal of Higher Education Outreach and
 Engagement
 Journal of Membrane Biology
 Journal of Speech, Language, and Hearing
 Research: JSLHR [W]
 Journal of Tumor Marker Oncology
 Reactions Weekly (print edition only
 discontinued)
 Receptors and Channels [E12]
 Rehabilitation Education
 Seminars in Liver Disease

The following new subscriptions were added (*please note the format in which subscriptions are available*):

**M = Multicultural Health Information
Resource Center (MHIRC)**

Print access:

Caring for Hispanic Patients [M]
 Clinical Evidence
 Dental Economics
 Drug Topics
 Geriaction
 Guide to Good Clinical Practice
 Journal of National Black Nurses Association [M]
 Journal of the National Cancer Institute
 Journal of the American College of Dentists
 Organizational Ethics: Healthcare, Business, and Policy
 Pharmacist's Letter

Print access and online access:

AJOT (American Journal of Occupational Therapy)
 [added online access]
 American Journal of Pharmaceutical Education
 Healthcare Disparities Report [M]
 Journal of Allied Health
 Journal of Alternative and Complementary Medicine
 Journal of Bone and Mineral Research
 Journal of Reproductive Medicine
 Journal of Urban Health [M]

Online access:

European Journal of Cardio-thoracic Surgery
 Journal of Cardiac Surgery
 Journal of Vascular Surgery
 Journal of Wound, Ostomy and Continence Nursing
 Movement Disorders
 Neurobiology of Disease
 Public Health

Serials Changes: Challenges Continue (continued from page four)

The Library is not renewing the *print* subscriptions for the following titles; these titles, however, are still available online via Wiley Interscience:

American Journal of Medical Genetics	Journal of Comparative Neurology
The Anatomical Record	Journal of Medical Virology
The Annals of Neurology	Journal of Neuroscience Research
Arthritis & Rheumatism	Journal of Pathology
British Journal of Surgery	Journal of Peptide Science
Cancer + Cancer Cytopathology	Journal of Pharmaceutical Sciences
Clinical Anatomy	Lasers in Surgery and Medicine
Diagnostic Cytopathology	Magnetic Resonance in Medicine
Genetic Epidemiology	Molecular Carcinogenesis
Health Economics	Pediatric Pulmonology
International Journal of Cancer	Proteins: Structure, Function and Genetics
International Journal of Eating Disorders	Research in Nursing & Health
Journal of Cellular Physiology	Statistics in Medicine
Journal of Clinical Ultrasound	Ultrasound in Obstetrics & Gynecology



Nature online access ends

The Creighton libraries have had online access to the journal Nature and several of its sub-journals (Nature Biotechnology, Nature Cell Biology, Nature Genetics, Nature Immunology, Nature Medicine, Nature Neuroscience, and Nature Structural & Molecular Biology), and three other journals (Protein Engineering, Journal of Proteome research, and JBSD - Journal of Biomolecular Structure and Dynamics). Access was paid for by a grant from the Biomedical Research Infrastructure Network (BRIN), which ended for us on 1 February 2005.

Both the Health Sciences Library and Reinert Alumni Library still have print subscriptions to Nature, and HSL subscribes to Nature Genetics, Nature Medicine, and Nature Structural & Molecular Biology. Online access is available via EBSCOHost to Nature, Nature Cell Biology, Nature Genetics, Nature Medicine, Nature Neuroscience, and Nature Structural & Molecular Biology after a one-year embargo.

We are exploring possible avenues for purchasing current online access to these important but expensive journals.



Creighton University Medical Center
Health Sciences Library
2500 California Plaza
Omaha NE 68178-0210

Hours of Operation

Library/LRC

Sunday 10:00 am—Midnight
Monday—Thursday 7:30 am—Midnight
Friday 7:30 am—10:00 pm
Saturday 10:00 am— 8:00 pm

Reference Desk

Sunday 1:30 pm—10:00 pm
Monday-Thursday 7:30 am—10:00 pm
Friday 7:30 am— 6:00 pm
Saturday 10:00 am— 6:00 pm

Drug Informatics

Monday-Friday 8:00 am— 5:00 pm

Creighton Media Services

Monday—Friday 8:00 am— 5:00 pm

Points of Contact

Director

A. James Bothmer

jbothmer@creighton.edu

Telephone:

Administration	402/280-5135
Circulation	402/280-5109
Interlibrary Loan	402/280-5144
Learning Resources Center	402/280-5131
Reference	402/280-5138
Serials (Journals)	402/280-5137
Technical Services	402/280-5102
Fax	402/280-5134

Web: <http://www.hsl.creighton.edu>

Drug Informatics Center

Telephone: 402/280-5100, 280-5101

Web: <http://druginfo.creighton.edu>

Creighton Media Services

Telephone: 402/280-5140

Web: <http://www.creighton.edu./mediaservices>