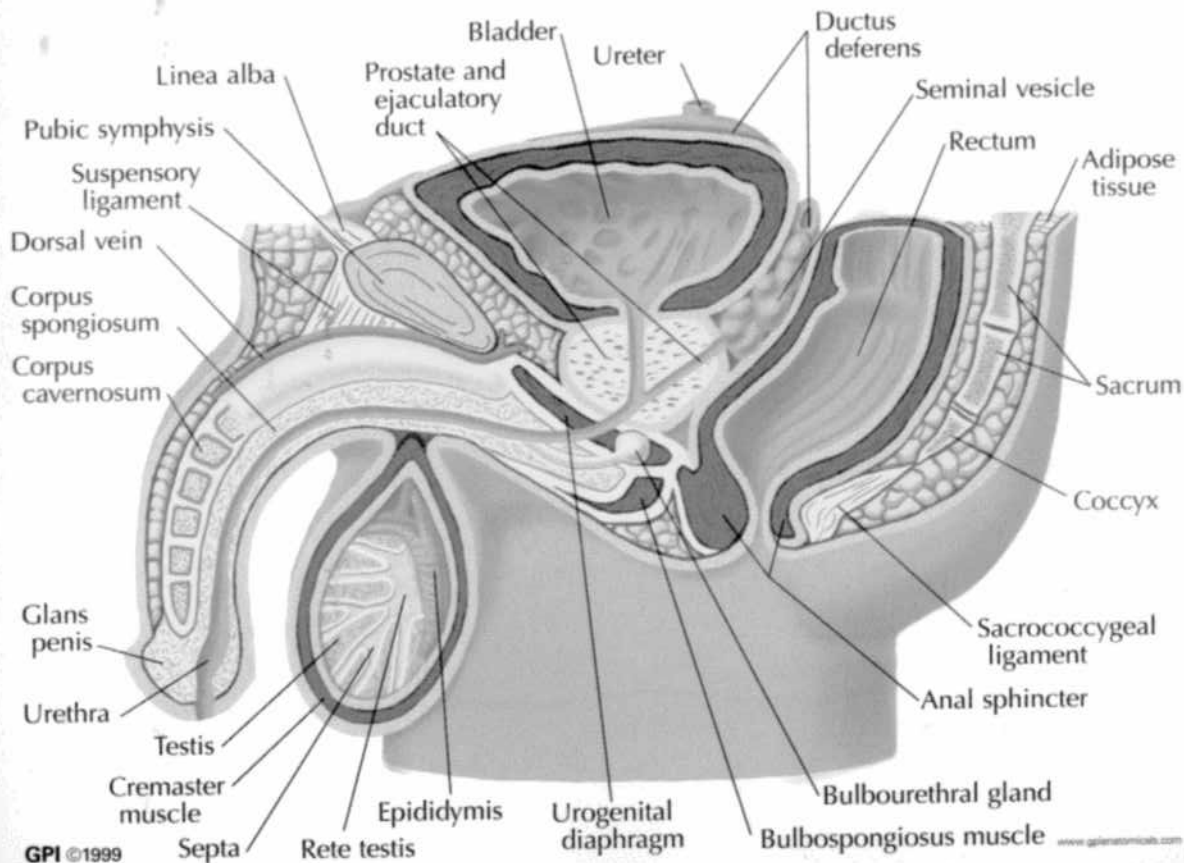
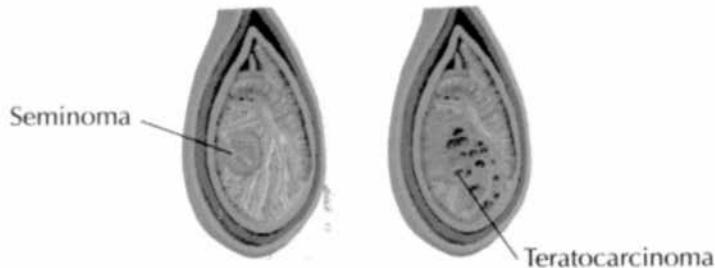


MALE PELVIS



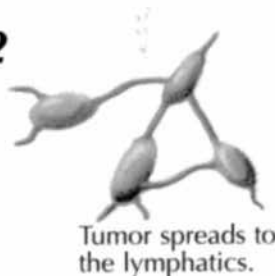
STAGING OF TESTIS TUMORS

stage 1

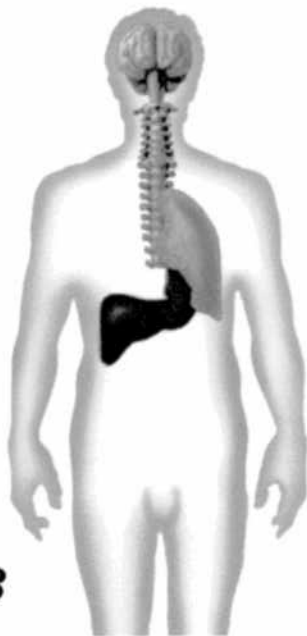


Tumor confined to the testis. The most common tumors of the testicle are seminoma as shown on model, and teratocarcinoma.

stage 2



stage 3



Tumor spreads to sites beyond the lymphatics. The most common location is the lung, but it may spread to the liver, bones and brain.